



# Winstar Display Co., LTD

## 華凌光電股份有限公司



住址: 407 台中市中清路 163 號  
No.163 Chung Ching RD.,  
Taichune, Taiwan, R.O.C

WEB: <http://www.winstar.com.tw>  
E-mail: [sales@winstar.com.tw](mailto:sales@winstar.com.tw)  
Tel:886-4-24262208 Fax : 886-4-24262207

### SPECIFICATION

**CUSTOMER :** \_\_\_\_\_

**MODULE NO.:** WWLED/DRIVER-57-C#

<p style="text-align: center;"><b>APPROVED BY:</b></p> <p style="text-align: center;">( FOR CUSTOMER USE ONLY )</p>	<p style="text-align: center;"><b>PCB VERSION:</b> _____</p> <p style="text-align: center;"><b>DATA:</b> _____</p>
---------------------------------------------------------------------------------------------------------------------	--------------------------------------------------------------------------------------------------------------------

SALES BY	APPROVED BY	CHECKED BY	PREPARED BY

VERSION	DATE	REVISED PAGE NO.	SUMMARY
0	2010.03.11		First issue

MODLE NO :

**RECORDS OF REVISION**

**DOC. FIRST ISSUE**

VERSION	DATE	REVISED PAGE NO.	SUMMARY
0	2010.03.11		First issue

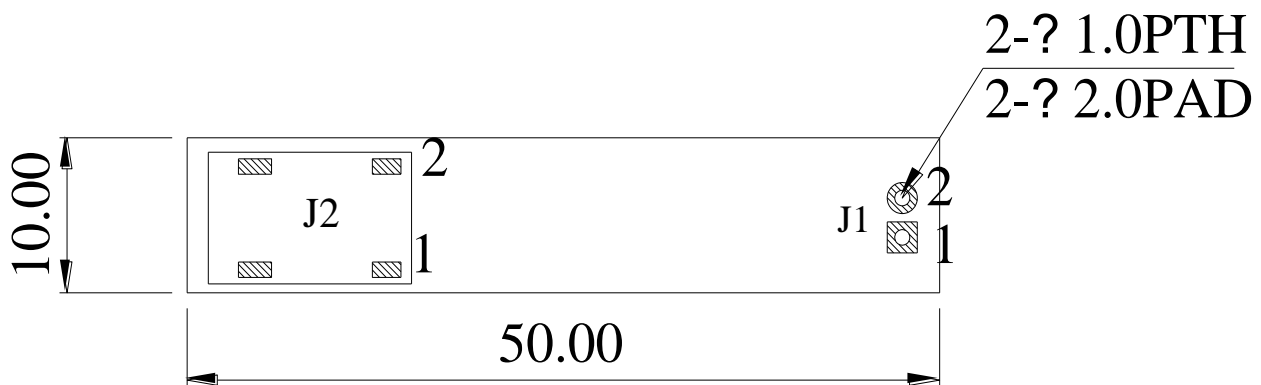
# 1. Electrical Characteristics

ITEM	SYMBOL	CONDITION	MIN.	TYPICAL	MAX.	UNIT
Supply voltage for logic	$V_{DD}-V_{SS}$		4.5	5		V
Supply current	$I_{DD}$	$V_{DD}=5V$	289	305	311	Ma
B/L out voltage				23.5		V
B/L out current				58.6		Ma

# 2. Absolute Maximum Ratings

Item	Symbol	Min	Typ	Max	Unit
Operating Temperature	$T_{OP}$	-20	—	+70	°C

# 3. Contour Drawing



J2

PIN NO.	SYMBOL
1	B/L -
2	B/L +

J1

PIN NO.	SYMBOL
1	$V_{SS}$
2	+5V