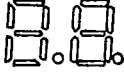
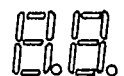
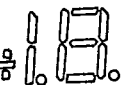
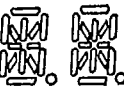
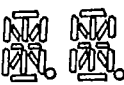



EVERLIGHT

LED DIGIT DISPLAYS

T-41-33

OK

Display Size	Type No. and Remark (*)	New Model No.	Chip		C. C. or C. A.	Peak Wave Length λp (nm)	Absolute Maximum Ratings				Electro-Optical Characteristics						Pack- age Fig.		
			Material	Emitted Color			Δλ (nm)	Po (mW)	If (mA)	Peak If (mA)	Vf (V)			Rec. If (mA)	If (μcd)				
											Min.	Typ.	Max.		Min.	Typ.			
	D505RWB *	—	GaAsP	Red	Common	655	40	110	40	200	1.5	1.7	2.0	10~20	200	500	22		
	D505HWB **	—	GaP	Bright Red		697	90	45	15	50	1.7	2.1	2.8	5~10	300	650			
	D505IDR *	—	GaAsP/GaP	Hi-Eff. Red		635	45	100	30	160	1.7	2.0	2.8	10~20	750	1900			
	D505GWA *	—	GaP	Green		Cathode	565	30	100	30	160	1.7	2.1	2.8	10~20	750		1900	
	D505YWB	—	GaAsP/GaP	Yellow		585	35	85	20	160	1.7	2.0	2.8	10~20	700	1700			
	D505EDE	—	GaAsP/GaP	Orange		635	45	100	30	160	1.7	2.0	2.8	10~20	750	1900			
	D506RWB *	—	GaAsP	Red	Anode	655	40	110	40	200	1.5	1.7	2.0	10~20	200	500			
	D506HWB **	—	GaP	Bright Red		697	90	45	15	50	1.7	2.1	2.8	5~10	300	650			
	D506IDR *	—	GaAsP/GaP	Hi-Eff. Red		635	45	100	30	160	1.7	2.0	2.8	10~20	750	1900			
	D506GWA *	—	GaP	Green		565	30	100	30	160	1.7	2.1	2.8	10~20	750	1900			
	D506YWB	—	GaAsP/GaP	Yellow		585	35	85	20	160	1.7	2.0	2.8	10~20	700	1700			
	D506EDE	—	GaAsP/GaP	Orange		635	45	100	30	160	1.7	2.0	2.8	10~20	750	1900			
	D511RDB *	ELD-6740R	GaAsP	Red	Common	655	40	110	40	200	1.5	1.7	2.0	10~20	200	500	23		
	D511HWB **	ELD-6740P	GaP	Bright Red		697	90	45	15	50	1.7	2.1	2.8	5~10	300	700			
	D511IDR *	ELD-4940HR	GaAsP/GaP	Hi-Eff. Red		635	45	100	30	160	1.7	2.0	2.8	10~20	800	2000			
	D511GWA *	ELD-6440G	GaP	Green		Cathode	565	30	100	30	160	1.7	2.1	2.8	10~20	800		2000	
	D511YWB	ELD-6840Y	GaAsP/GaP	Yellow		585	35	85	20	160	1.7	2.0	2.8	10~20	700	1700			
	D511EDE *	ELD-6640E	GaAsP/GaP	Orange		635	45	100	30	160	1.7	2.0	2.8	10~20	800	2000			
	D512RDB *	ELD-6710R	GaAsP	Red	Anode	655	40	110	40	200	1.5	1.7	2.0	10~20	200	500			
	D512HWB **	ELD-6710P	GaP	Bright Red		697	90	45	15	50	1.7	2.1	2.8	5~10	300	700			
	D512IDR *	ELD-4910HR	GaAsP/GaP	Hi-Eff. Red		635	45	100	30	160	1.7	2.0	2.8	10~20	800	2000			
	D512GWA *	ELD-6410G	GaP	Green		565	30	100	30	160	1.7	2.1	2.8	10~20	800	2000			
	D512YWB	ELD-6810Y	GaAsP/GaP	Yellow		585	35	85	20	160	1.7	2.0	2.8	10~20	700	1700			
	D512EDE *	ELD-6610E	GaAsP/GaP	Orange		635	45	100	30	160	1.7	2.0	2.8	10~20	800	2000			
	D514RDB	ELD-6730R	GaAsP	Red	Common	655	40	110	40	200	1.5	1.7	2.0	10~20	200	500	24		
	D514HWB *	ELD-6730P	GaP	Bright Red		697	90	45	15	50	1.7	2.1	2.8	5~10	300	700			
	D514IDR	ELD-6930HR	GaAsP/GaP	Hi-Eff. Red		635	45	100	30	160	1.7	2.0	2.8	10~20	800	2000			
	D514GWA	ELD-6430G	GaP	Green		Anode	565	30	100	30	160	1.7	2.1	2.8	10~20	800		2000	
	D514YWB	ELD-6830Y	GaAsP/GaP	Yellow		585	35	85	20	160	1.7	2.0	2.8	10~20	700	1700			
	D514EDE	ELD-6630E	GaAsP/GaP	Orange		635	45	100	30	160	1.7	2.0	2.8	10~20	800	2000			
	D525RWB	ELD-3784R	GaAsP	Red	Common	655	40	110	40	200	1.5	1.7	2.0	10~20	200	400	25		
	D525HWB	ELD-3784P	GaP	Bright Red		697	90	45	15	50	1.7	2.1	2.8	5~10	250	550			
	D525GWA	ELD-3784G	GaP	Green		Cathode	565	30	100	30	160	1.7	2.1	2.8	10~20	500		1200	
	D525YWB	ELD-3784Y	GaAsP/GaP	Yellow		585	35	85	20	160	1.7	2.0	2.8	10~20	450	900			
	D525EWA	ELD-3784E	GaAsP/GaP	Orange		635	45	100	30	160	1.7	2.0	2.8	10~20	600	1300			
	D526RWB	ELD-526RWB	GaAsP	Red		Anode	655	40	110	40	200	1.5	1.7	2.0	10~20	200		400	
	D526HWB	ELD-526HWB	GaP	Bright Red	697		90	45	15	50	1.7	2.1	2.8	5~10	250	550			
	D526GWA	ELD-526GWA	GaP	Green	565		30	100	30	160	1.7	2.1	2.8	10~20	500	1200			
	D526YWB	ELD-526YWB	GaAsP/GaP	Yellow	585		35	85	20	160	1.7	2.0	2.8	10~20	450	900			
	D526EWA	ELD-526EWA	GaAsP/GaP	Orange	635		45	100	30	160	1.7	2.0	2.8	10~20	600	1300			
		D527RWB	ELD-3785R	GaAsP	Red		Common	655	40	110	40	200	1.5	1.7	2.0	10~20		200	400
		D527HWB	ELD-3785P	GaP	Bright Red	697		90	45	15	50	1.7	2.1	2.8	5~10	250		550	
D527GWA		ELD-3785G	GaP	Green	Cathode	565		30	100	30	160	1.7	2.1	2.8	10~20	500	1200		
D527YWB		ELD-3785Y	GaAsP/GaP	Yellow	585	35		85	20	160	1.7	2.0	2.8	10~20	400	900			
D527EWA		ELD-3785E	GaAsP/GaP	Orange	635	45		100	30	160	1.7	2.0	2.8	10~20	600	1300			
	B1001RDA	ELB-1000R	GaAsP	Red	—	655	40	110	40	200	1.5	1.7	2.0	10~20	200	500	27		
	B1001HDA **	ELB-1000P	GaP	Bright Red		697	90	45	15	50	1.7	2.1	2.8	5~10	300	700			
	B1001GWA *	ELB-1000G	GaP	Green		565	30	100	30	160	1.7	2.1	2.8	10~20	800	2000			
	B1001YWA	ELB-1000Y	GaAsP/GaP	Yellow		585	35	85	20	160	1.7	2.0	2.8	10~20	700	1700			
	B1001EWA	ELB-1000E	GaAsP/GaP	Orange		635	45	100	30	160	1.7	2.0	2.8	10~20	800	2000			

# LED DIGIT DISPLAYS

EVERLIGHT

T-41-33

### TEST CONDITION FOR EACH PARAMETER:

Parameter:	Symbol	Unit	Test Condition
Reverse Voltage	$V_R$	VOLT	$V_R = 5.0$ Volt
Reverse Current	$I_R$	$\mu$ A	$I_F = 20$ mA
Forward Voltage	$V_F$	VOLT	$I_F = 10$ mA
Luminous Intensity	$I_v$	MCD	$I_F = 20$ mA
Luminous Intensity Matching Ratio	$I_v - m$		
Spectral Line Half-Width	$\Delta\lambda$	nm	
Power Dissipation	$P_D$	mW	
Peak Forward Current (Duty 1/10 1KHz)	$I_F$ (Peak)	mA	
Recommended Operating Current	$I_F$ (Rec)	mA	

### ABSOLUTE MAXIMUM RATINGS: (Ta = 25°C)

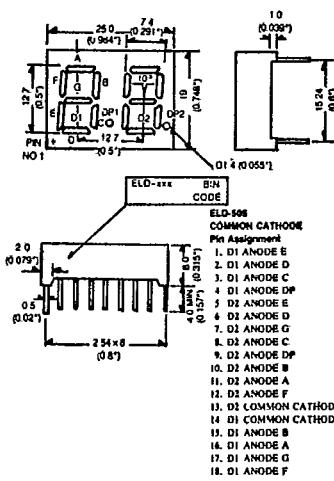
Reverse Voltage	5 Volt
Reverse Current ( $V_R = 5V$ )	10 $\mu$ A
Operating Temperature Range:	-40°C To 85°C
Storage Temperature Range :	-40°C To 100°C
Lead Soldering Temperature :	260°C For 5 Seconds
(1.6mm (1/16 inch) From Body)	

### REMARKS:

- IV-m-2:1
- The most popular Types • Common Types The rest are special Types
- Hi-Eff. Red - High Efficiency Red

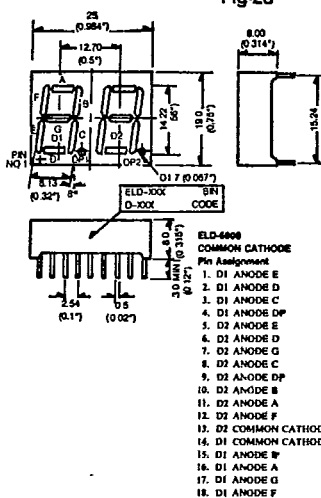
### PACKAGE DIMENSIONS:

Fig-22



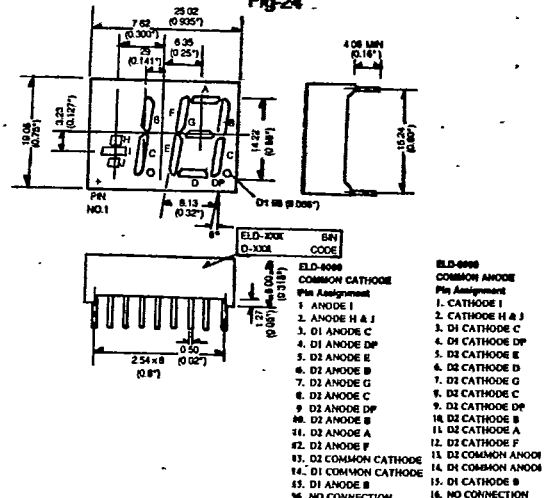
E182d

Fig-23



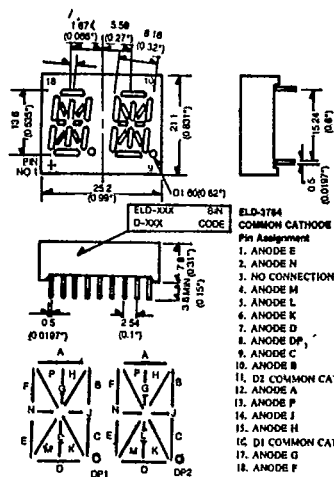
E182d

Fig-24



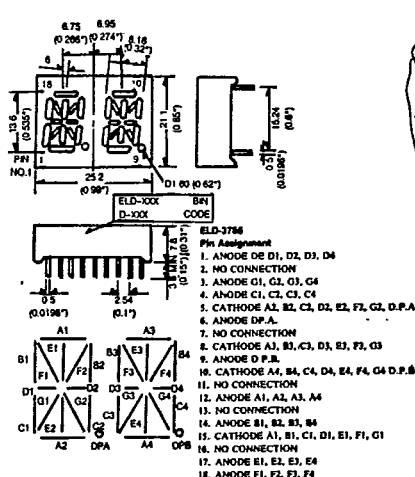
NONE

Fig-25



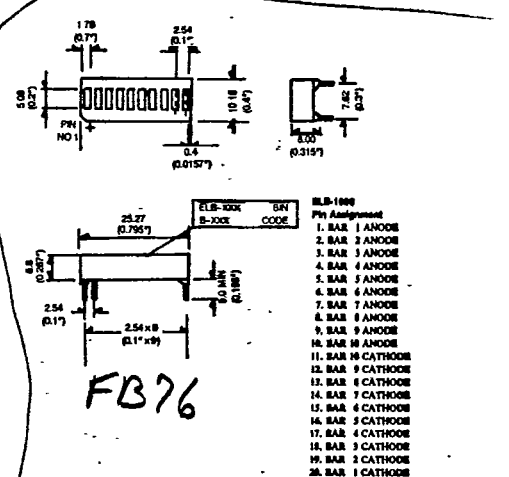
NONE

Fig-26



NONE

Fig-27



FB76

- NOTE:
1. The average luminous intensity is obtained by summing the luminous intensity of each segment and divided by the total number of segments. The displays are categorized for luminous intensity with the intensity category designed by a letter located on the side of the package.
  2. Luminous intensity is measured with a light sensor and filter, combination that approximates the CIE (International Commission, on Illumination) eye-response curve.
  3. Clean only in water, Isopropanol, ethanel, Freon TF or TF (or equivalent)
  4. All dimensions are in millimeters/inches. Tolerance =  $\pm 0.25$ mm/ $\pm 0.1$ inch