

SPECIFICATIONS

RATING: 50mA, 12VDC

ELECTRICAL LIFE: 100,000 cycles (ELTS)
1,000,000 cycles (EHTS)

Please inquire our office

CONTACT RESISTANCE: 100mΩ max

INSULATION RESISTANCE: 100MΩ min. 500VDC

DIELECTRIC STRENGTH: 250VAC/1 min

OPERATION FORCE: 100gf, 160gf, 260gf, 320gf, 520gf

STORAGE TEMPERATURE: -30°C to +80°C

CONTACT ARRANGEMENT: 1 pole 1 throw

MATERIALS

COVER - Stainless steel or SPCC

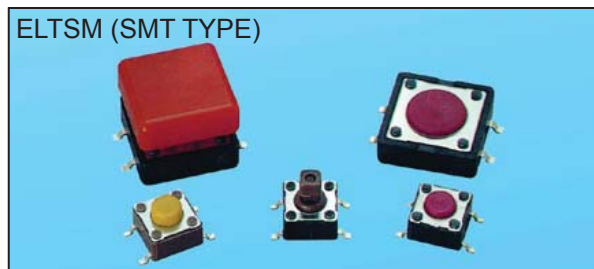
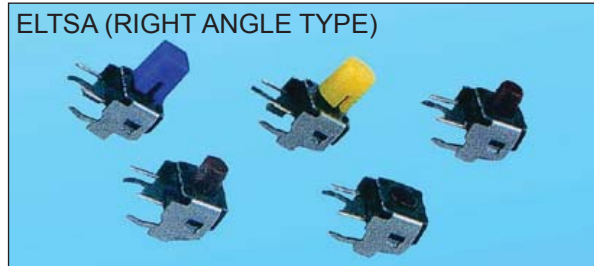
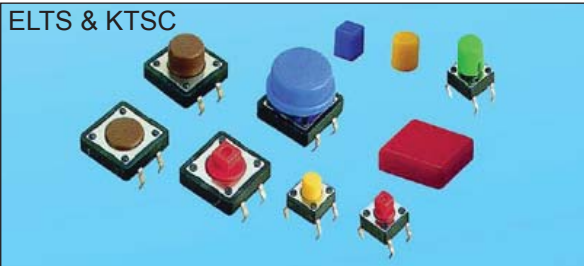
BASE - UL94V-0 Nylon Thermoplastic(Black)

STEM - UL94V-0 Nylon Thermoplastic

CONTACT DISC - Phosphor bronze or stainless steel with silver cladding

TERMINAL - Brass with silver cladding

CAP - Thermoplastic ABS



HOW TO ORDER

ELTS □ □ - □ □ □ - □ □ □ □

Package Style <Only For ELTSM>:
B= Tube
T/R=Tape & Reel

RoHS code
H= RoHS Compliant

Operation Force:

▲ K= 100gf N= 160gf
▲ Y= 520gf R= 260gf
 S= 320gf

<▲12x12, K, Y Unavailable>

Dimension H:

CODE	ELTS-6	ELTSA-6	ELTS-6/ELTSM-6/ELTSG-6	ELTSG2	ELTS-2/ELTSM-2
▲(SQ.)x2.4mm	1	3.15 mm	4.3 mm	1	4.3 mm
	2	3.85 mm	5.0 mm	4	7.3 mm
	3	5.85 mm	7.0 mm		(SQ.) x3.8 mm
	44	6.15 mm	7.3 mm		(SQ.) x3.8 mm
	5	8.35 mm	9.5 mm		
	6	11.85 mm	13.0 mm	5	8.5mm

*If you need the other height option, please inquire our office

□ = None Post

Prod Size:

6= 6.2x6.2 mm

▲2= 12x12 mm

<▲12x12 ELTSA Unavailable>

□ = Regular Type Tactile Switch

A= Right Angle Type Tactile Switch

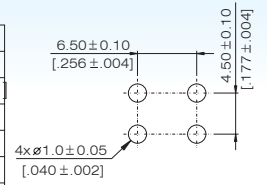
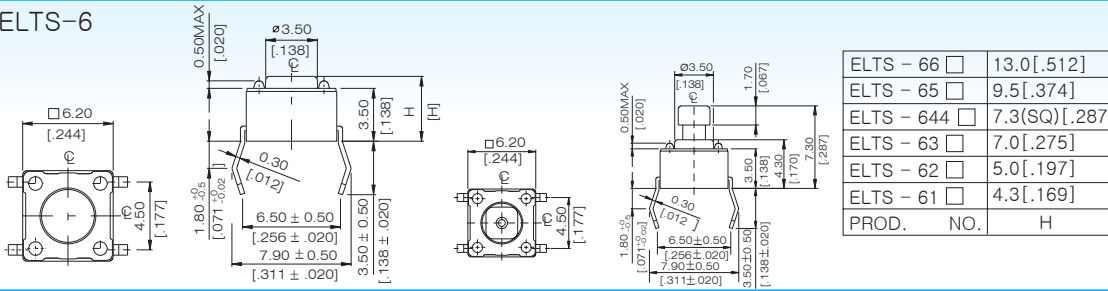
G= With Ground Terminal Type Tactile Switch

M= SMT Type Tactile Switch

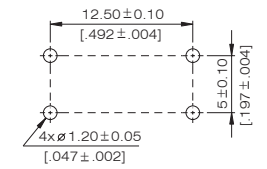
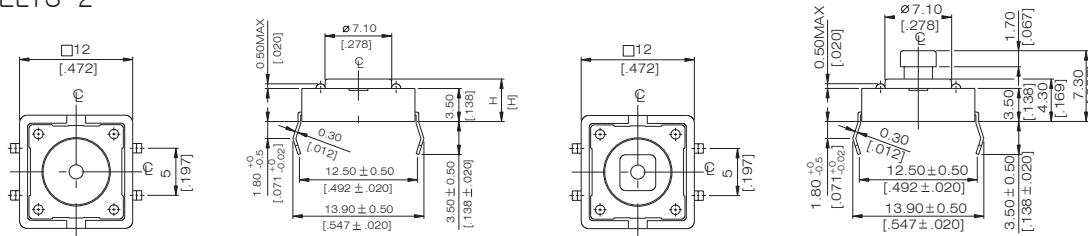
EL = 100,000 cycles

EH = 1,000,000 cycles (only 6.2x6.2mm, 100gf, 160gf, 260gf, available)

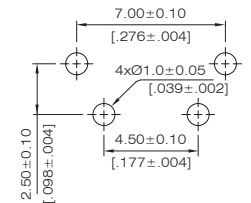
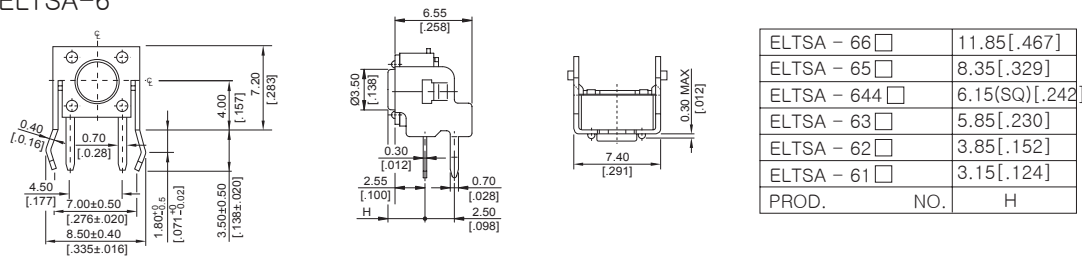
ELTS-6



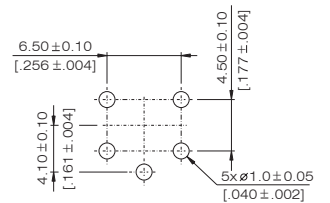
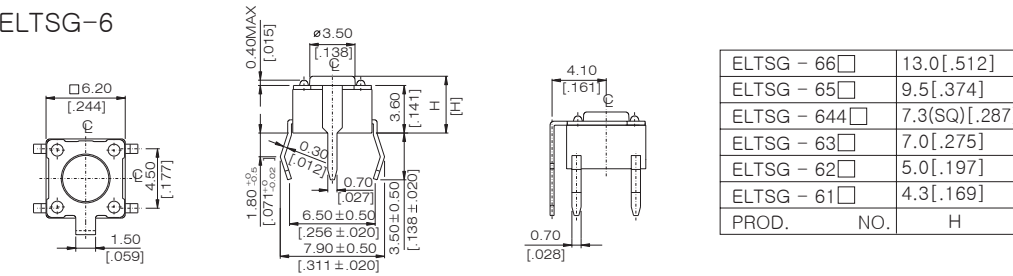
ELTS-2



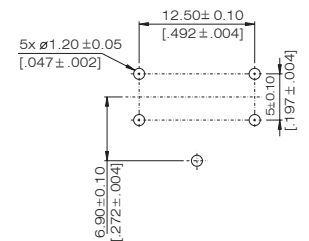
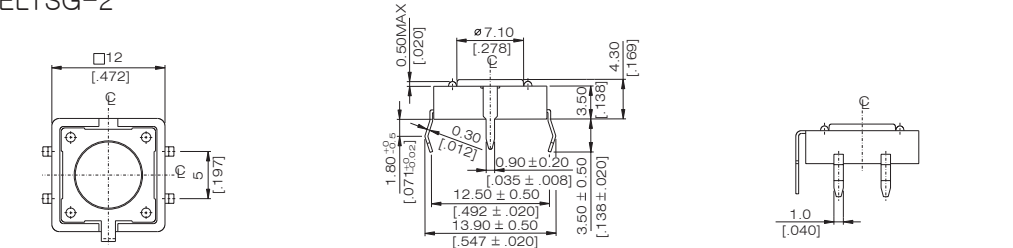
ELTSA-6



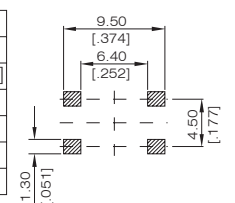
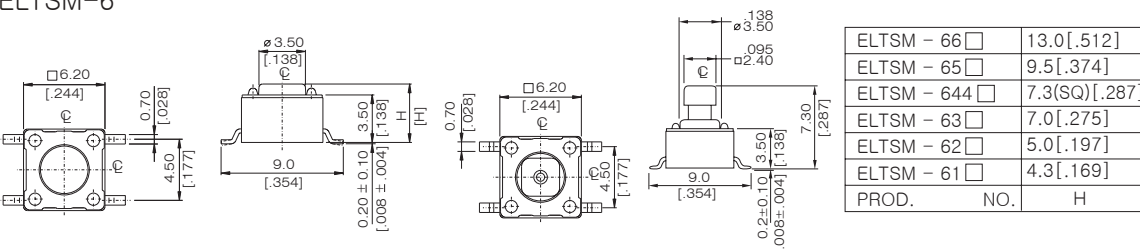
ELTSG-6



ELTSG-2



ELTSM-6



ELTSM-2

