

R19 Series Rocker Switches / ILLUMINATED



R19 : 6A 250V AC.
9A 125V AC.
16A 250V AC.
21A 125V AC.

SS21: 12A 125/250V AC. (CSA)
10A 125/250V AC. (UL)
12(4)A 250V~T85. (VDE, ENEC10)

SPECIFICATION:

Rating : 6A 250V AC (Standard) , 12A 250V AC.
Contacts gap : >3mm.
Contact resistance : <20mΩ. (initial)
Insulation resistance : >1,000MΩ.
Withstand voltage : > 1,500V DC for 1 minute.
Mechanical life : > 30,000 Cycles.
Electrical life : > 10,000 Cycles.

MATERIALS:

Body: Nylon 66.
Rocker: PC or Nylon 66.
Contact surface: Alloy contact point
, Silver plated.
Illuminated rockers: 125V/250V Neon Lamp,
24V 12V 9V 6V Bulb.
Terminal: Brass, Silver plated.



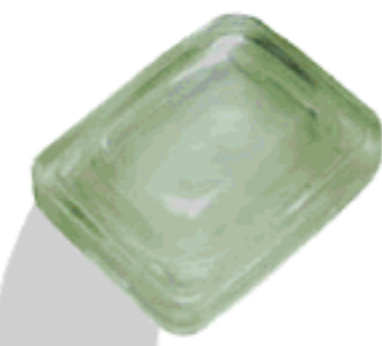
R19-20RL
SS21BBDRL



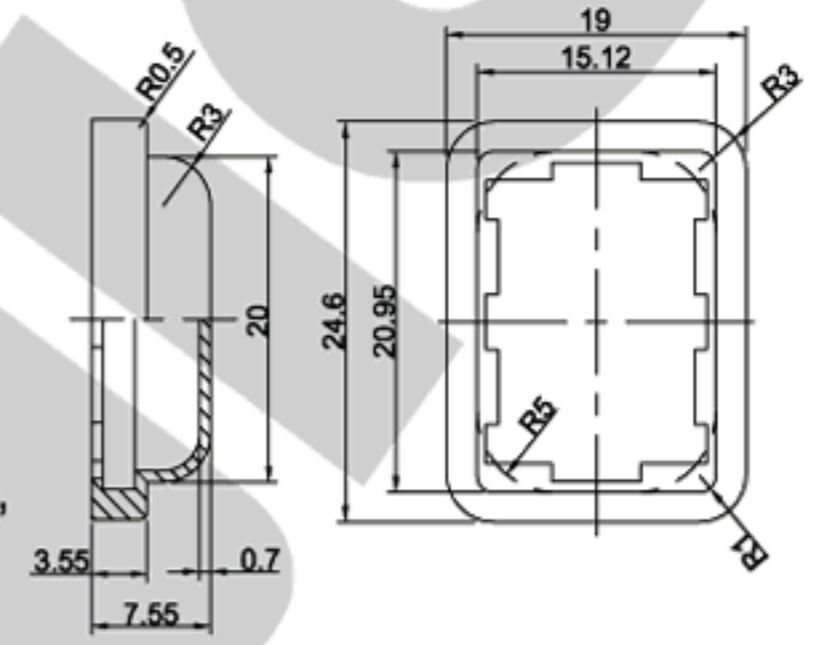
R19-20I
Illuminated



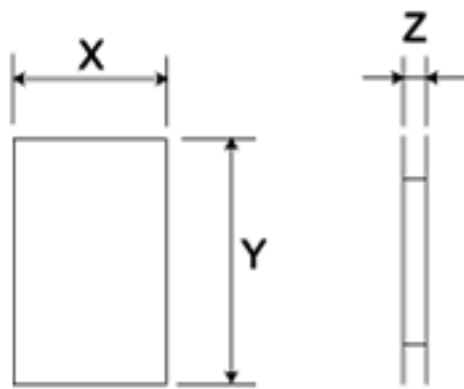
R19-20
SS21BBBT



R19 SEAL CAP



MOUNTING HOLE

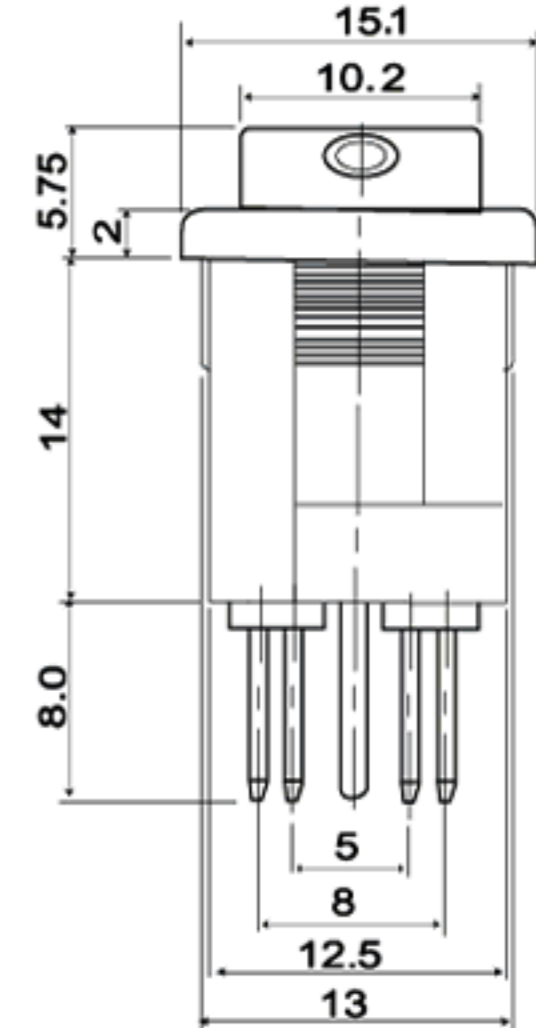
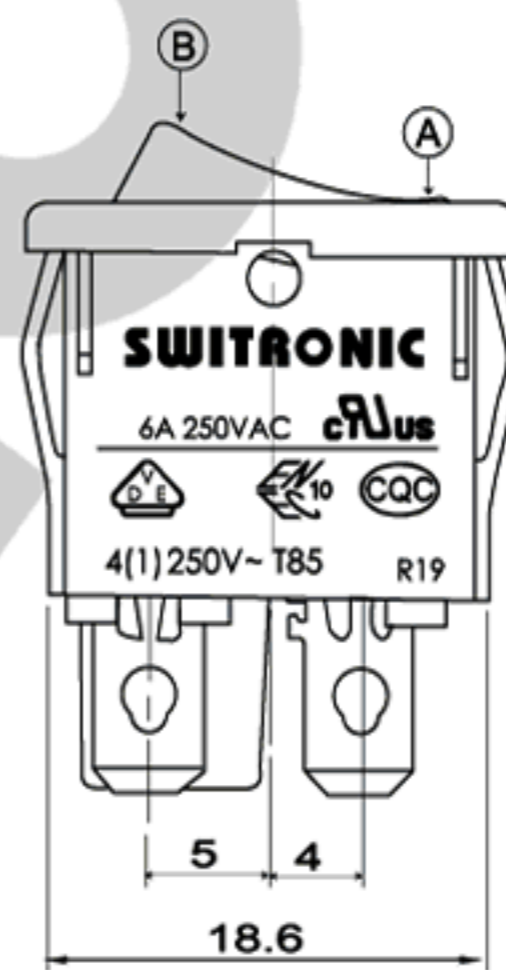


Z	X	Y
0.70 ~ 1.25	12.9 ~ 13.1	19.2 ~ 19.3
1.25 ~ 2.00	12.9 ~ 13.1	19.3 ~ 19.4
2.00 ~ 3.00	12.9 ~ 13.1	19.5 ~ 19.6

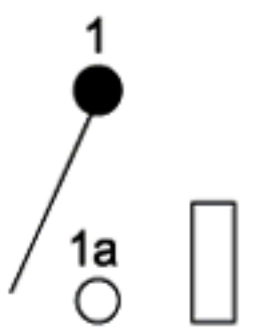
R19-20BBBT (6A 250V / 9A 125V AC DPST)

R19-20IBRBT2 (W / RED LAMP, 6A 250V / 9A 125V AC, DPST)

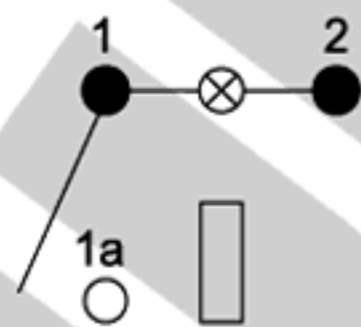
SS21BBBT (12A 250V AC, DPST)



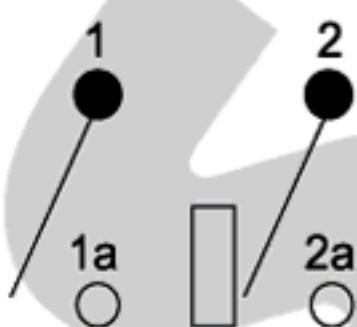
SCHEMATIC



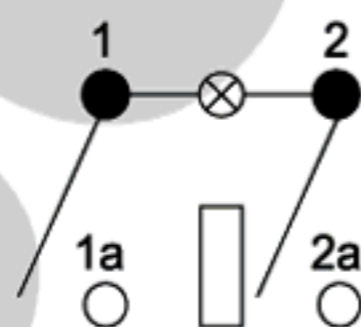
SPST



SPST
W/LAMP



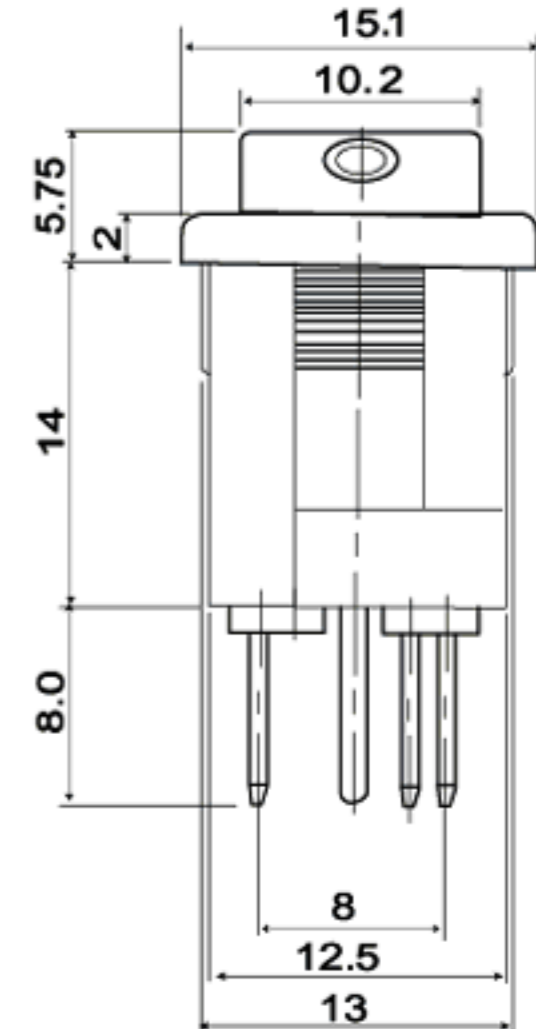
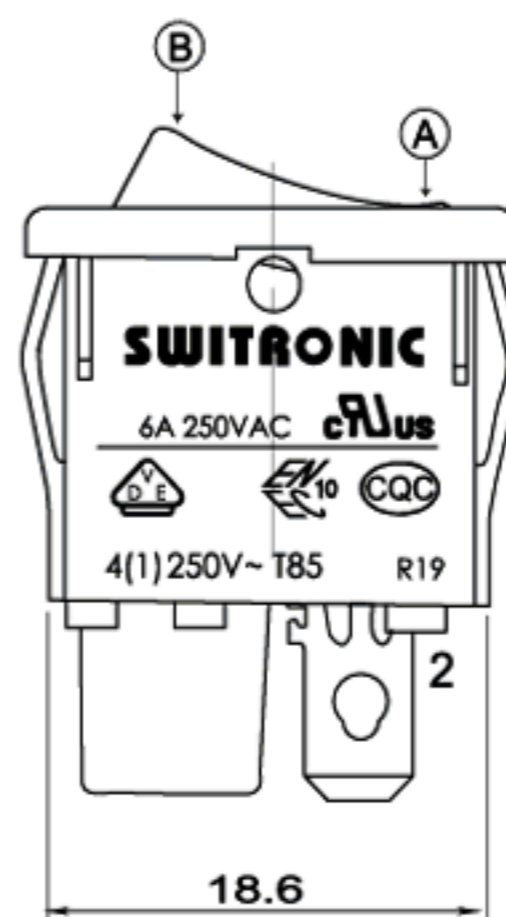
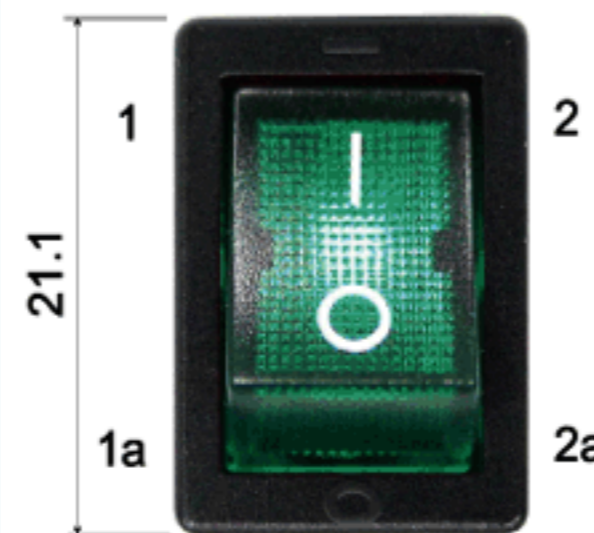
DPST



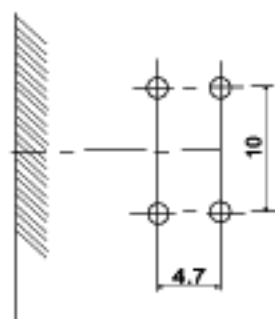
DPST
W/LAMP

R19-00IBGBT2 (6A 250V / 9A 125V AC, W / GREEN LAMP, SPST)

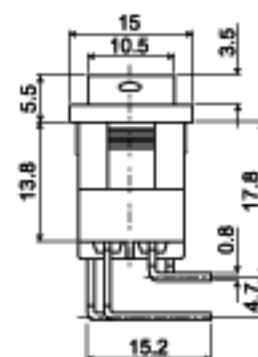
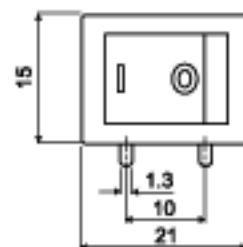
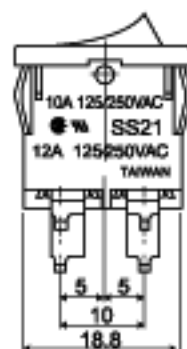
SS21BBBTS (12A 250V AC, SPST)



SPST: R19-00BBDRL
 SS21BBDRLS (12A 250V AC)
 DPST: R19-20BBDRL
 SS21BBDRL (12A 250V AC)

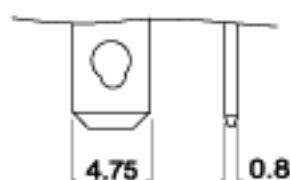


Angle type

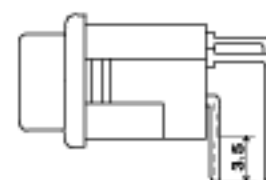


FUNCTION	MODEL NO.	OPTION OF TERMINAL			
		S	T	P	R
SPST ON OFF	R19-00 SS21		✓		✓
SPST W/LAMP ON OFF	R19-00I		✓		✓
DPST ON OFF	R19-20 SS21		✓		✓
DPST W/LAMP ON OFF	R19-20I		✓		✓

TERMINAL TYPE



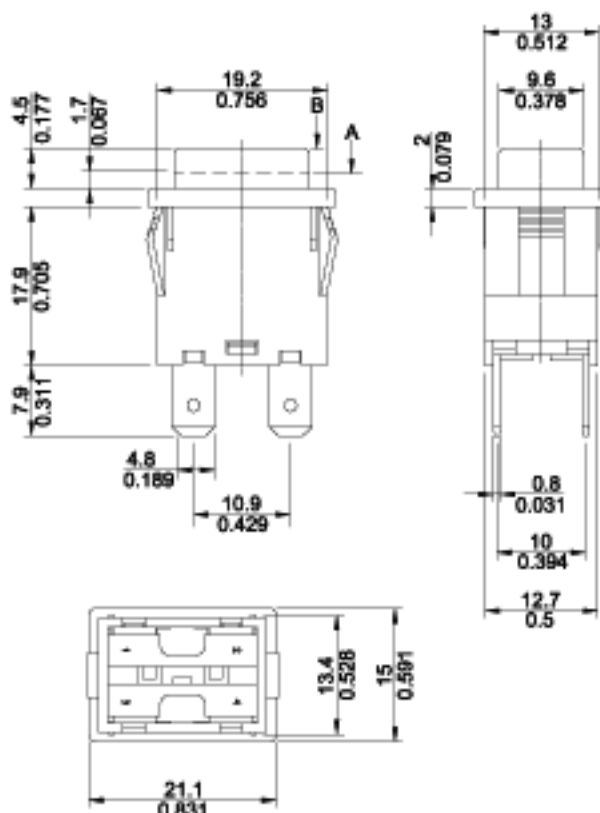
T TYPE



RR (Right angle)

RL (Left angle)

LC-8301



MODEL NO.	TYPE	
LC-8301	SPST OFF ON	
LC-8302	SPST OFF (ON)	
LC-8303	SPST OFF ON W/ LAMP	
LC-8304	SPST OFF (ON) W/ LAMP	
LC-8305	DPST OFF ON	
LC-8306	DPST OFF (ON)	
LC-8307	DPST OFF ON W/ LAMP	
LC-8308	DPST OFF (ON) W/ LAMP	

Flammability: UL94 V-0
Material of housing: PA66 Max
Material of rocker: PC
Contacts: Silver alloy
Terminal: Copper Silver Plated

Electrical rating: 15A 125V / 250V AC (UL) 10(4)A 250V AC (VDE)
Mechanical life: Over 30,000 Cycles
Electrical life: Over 10,000 Cycles
Contact resistance: <20 mΩ
Insulation resistance: >1,000MΩ (500V DC between the open contacts)
Dielectric resistance: >1,500V AC 1 minute

HOW TO ORDER

MODEL NO. + HOUSING COLOR + ROCKER COLOR OR LAMP COLOR + MARKING + TERMINAL TYPE + LAMP VOLTAGE

R19-00 : SPST, 6A
 R19-20 : DPST, 6A
 SS21 : 12A
 R19-00I (W/LAMP): SPST, 6A
 R19-20I (W/LAMP): DPST, 6A

B : BLACK
 W : WHITE
 G : GRAY

B : BLACK
 W : WHITE
 G : GRAY
 R : RED
 Y : YELLOW
 GN : GREEN

R : RED
 Y : YELLOW
 GN : GREEN

O A B C D
 E F G H

T
 RR
 RL

□ : NO LAMP
 1 : 125V AC
 2 : 250V AC
 3 : 12V DC
 4 : 24V DC