

# Selection Guide

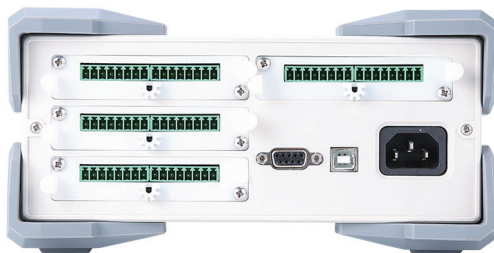
Name	Series	Model	Channel	Temperature Range	Resolution	Scanning Speed	Display	Withstand Voltage
Multi-channel Temperature Logger	UT3200	UT3232	32	-200-1800°C	0.1°C	500ms/time	4.3 inch TFT LCD	300V AC/DC
		UT3224	24	-200-1800°C	0.1°C	500ms/time	4.3 inch TFT LCD	300V AC/DC
		UT3216	16	-200-1800°C	0.1°C	500ms/time	4.3 inch TFT LCD	300V AC/DC
		UT3208	8	-200-1800°C	0.1°C	500ms/time	4.3 inch TFT LCD	300V AC/DC
Name	Series	Model	Voltage Range		Resolution		Resistance Range	Accuracy
			AC	DC	AC	DC		
Hipot Tester	UT5310+	UT5320R+	0.050kV-5.000kV	0.050 kV-6.00kV	0.001mA - 20mA	0.1uA - 20.00mA	0.1MΩ - 10GΩ	±(1.0%reading+5V); ±(2.0%reading+5digits)
		UT5310R+	0.050kV-5.000kV	0.050 kV-6.00kV	0.001mA - 10mA	0.1uA - 5.00mA	0.1MΩ - 10GΩ	±(1.0%reading+5V); ±(3.0%reading+2digits)
		UT5310D+	0.050kV-5.000kV	0.050 kV-6.00kV	0.001mA - 10mA	0.1uA - 5.00mA	-	±(1.0%reading+5V); ±(3.0%reading+2digits)
		UT5310A+	0.050kV-5.000kV	-	0.001mA - 10mA	-	-	±(3.0%reading+2digits)

## UT3200 Series Multi-channel Temperature Loggers

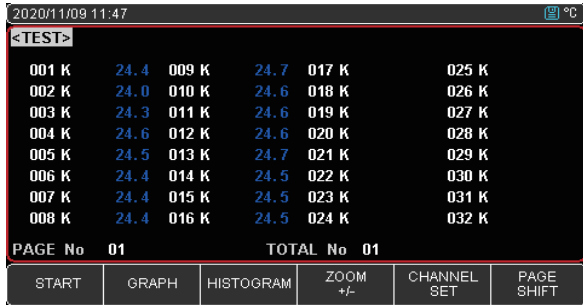


● UT3232

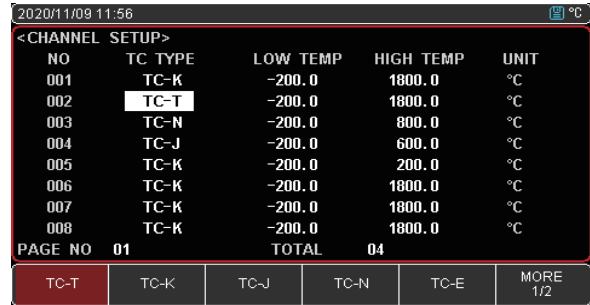
The UT3200 Series Multi-channel Temperature Loggers contain 4 models: UT3208, UT3216, UT3224 and UT3232, which corresponds with thermocouple testing channels of 8, 16, 24 and 32. With 4.3-inch LCD screen, this Series is compatible with multiple temperature sensors, can collect multichannel temperature data simultaneously. The UT3200 Series has advantages of upper/lower limit alarm, fast respond, stable data transmission and thermocouple short-circuit detection.



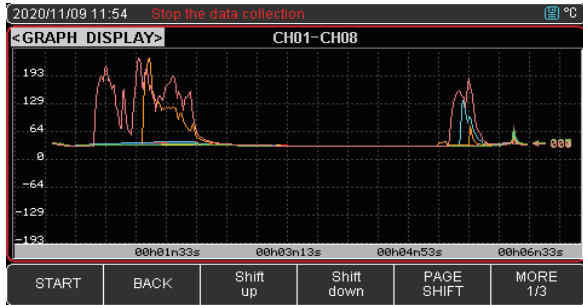
- 4.3 inch LCD screen
- Thermocouple short-circuit automatic detection
- Upper/lower temperature limit alarm settable for each channel
- Specified channel scanning
- Standard RS-232C and USB Device interface, SCPI protocol is supported
- Visual numerical reading, bar chart and curvilinear graph
- Standard USB Host interface, 8G U-disk, USB data storage is supported



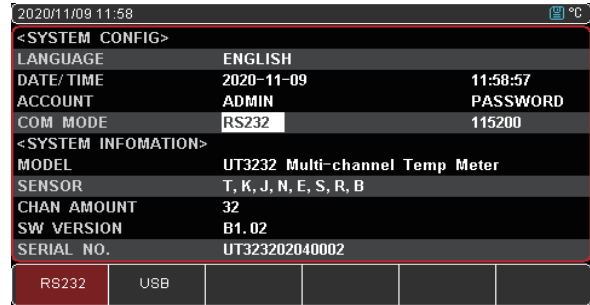
● 32 test channels, 4.3 inch LCD display



● It has a wide range of adaptability and supports K/N/E/J/T/R/S/B thermocouples



● Visual numerical reading, bar chart and curvilinear graph



● File management, Standard RS-232C and USB Device interface, SCPI protocol is supported

Key Specifications	UT3208	UT3216	UT3224	UT3232
Display mode	Visual numerical reading, bar chart and curvilinear graph			
Index No.	Thermocouple: J,K,T,E,S,N,B,R			
Measuring range	-200.0°C~1800.0°C (varies with different thermocouple)			
Resolution	0.1°C			
Number of channel	8	16	24	32
Scanning speed	Fast, slow			
Sorting function	Build-in data sorting, can set upper/lower temperature limit alarm for each channel			
Alarm function	Upper/lower temperature limit alarm			
User calibration	User calibration of each channel is allowed			
Button functions	Lock -keyboard lock, Print Sc -screenshot			
System setup	Language: Chinese/English, key tone setting			
Storage	FAT storage function (supports USB disk storage, mobile hard disk drive is not supported)			
Interface & protocol	RS-232 and USB communication interface, SCPI protocol			
Upper computer software	√			
Display mode	Test temperature range			Accuracy
T-type Thermocouple	-150°C-0°C, 0°C-400°C			±1.0°C, ±0.8°C
K-type Thermocouple	-100°C-0°C, 0°C-1350°C			±1.2°C, ±0.8°C
J-type Thermocouple	-100°C-0°C, 0°C-1200°C			±1.0°C, ±0.7°C
N-type Thermocouple	-100°C-0°C, 0°C-1300°C			±1.5°C, ±0.9°C
E-type Thermocouple	-100°C-0°C, 0°C-850°C			±0.9°C, ±0.7°C
S-type Thermocouple	-100°C-0°C, 100°C-300°C, 300°C-1750°C			±4.5°C, ±3.0°C, ±2.2°C
R-type Thermocouple	0°C-100°C, 100°C-300°C, 300°C-1750°C			±4.5°C, ±3.0°C, ±2.2°C
B-type Thermocouple	600°C-800°C, 800°C-1000°C, 1000°C-1800°C			±5.5°C, ±3.8°C, ±2.5°C